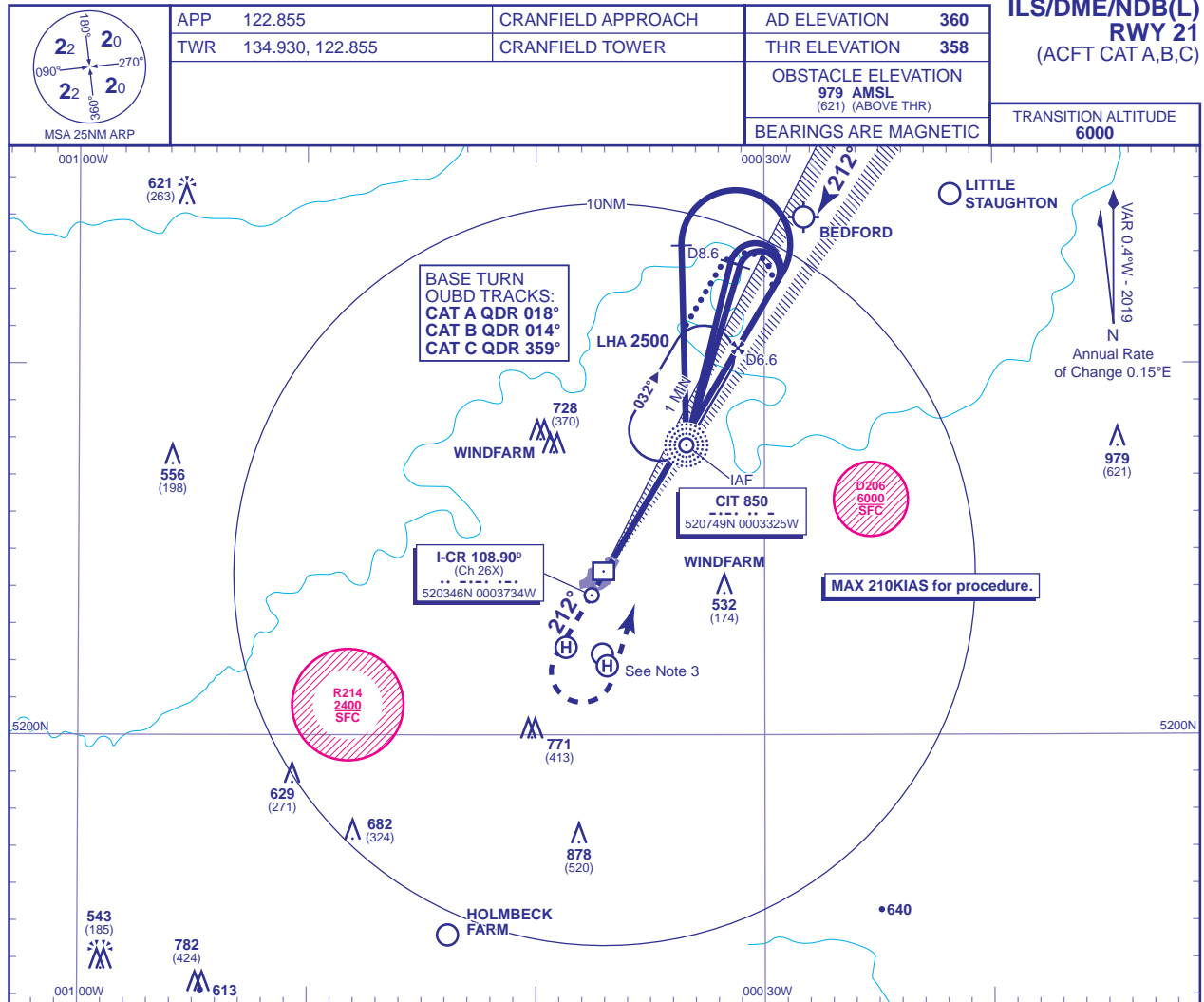


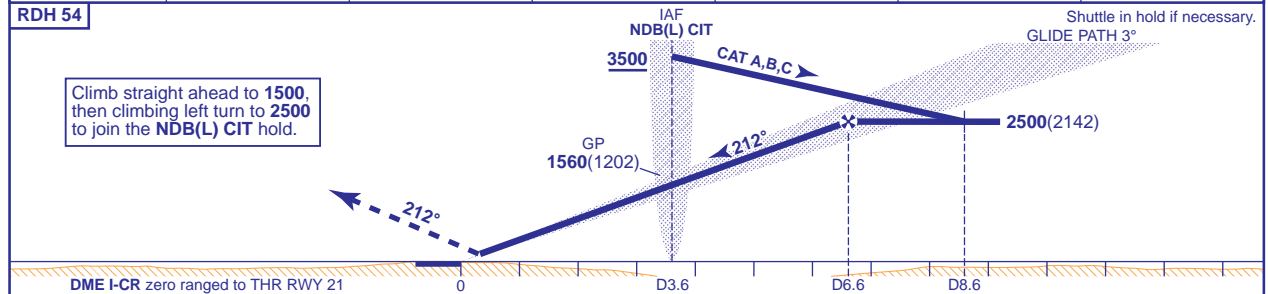
INSTRUMENT APPROACH CHART - ICAO

**CRANFIELD
ILS/DME/NDB(L)
RWY 21
(ACFT CAT A,B,C)**



RECOMMENDED PROFILE GLIDE PATH 3°, 320FT/NM

DME I-CR	6	5	4	3	2	1
ALT(HGT)	2310(1952)	1990(1632)	1680(1322)	1360(1002)	1040(682)	730(372)



DME I-CR zero ranged to THR RWY 21

Aircraft Category	A	B	C	Rate of descent	G/S KT	160	140	120	100	80
OCA (OCH)	CAT I	544(186)	556(198)	564(206)	FT/MIN	850	740	630	530	420
VM(C)OCA (OCH AAL)	Total Area	800(440)	970(610)	1150(790)						

ALTERNATIVE PROCEDURE EXTENDED HOLDING PATTERN
Extend the outbound leg of the NDB(L) CIT holding pattern to D8.6; descending to 2500(2142). Then turn right to intercept the LOC. Continue as for main procedure.

AIRCRAFT UNABLE TO RECEIVE DME
Fly outbound prior to baseturn or extend outbound leg of the NDB(L) CIT hold for 2.5MIN (CAT A); 2MIN (CAT B); 1.5MIN (CAT C) descending to 2500(2142). Then turn right to intercept the LOC. Continue as for main procedure.

- NOTE 1** ATC will normally require holding **not below 3500**. Lowest altitude to commence procedure after missed approach is **2500**.
NOTE 2 CIT NDB(L) hold restrictions: MAX holding level **5000**, MAX 180KIAS.
NOTE 3 Occasional light aircraft and helicopter activity at Salford Helipad (520222N 0003841W), Hulcote Farm (520211N 0003706W), and Helimech Helipad (520152N 0003653W).
NOTE 4 Aircraft may be requested to report crossing the DTY115 radial.

CHANGE (10/18): FREQUENCIES. OCA (OCH) MINIMA AMENDED.

AERO INFO DATE 22 JUN 18