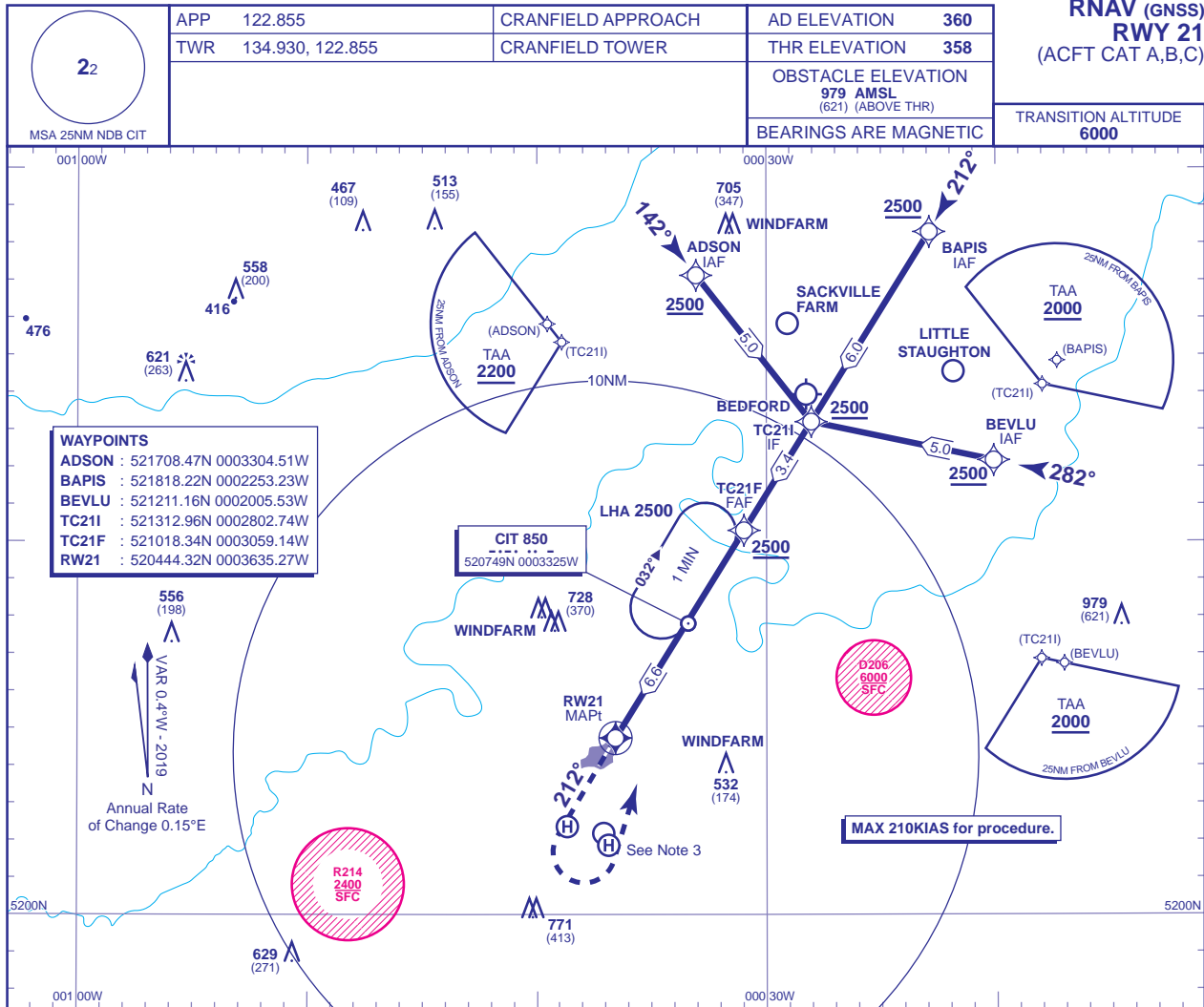


INSTRUMENT APPROACH CHART - ICAO

**CRANFIELD
RNAV (GNSS)
RWY 21
(ACFT CAT A,B,C)**



WAYPOINTS

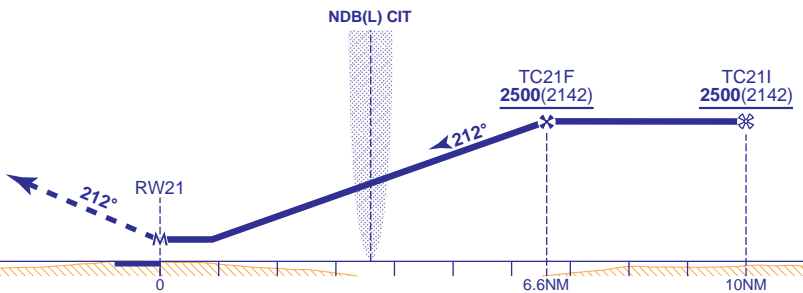
ADSON	: 521708.47N 0003304.51W
BAPIS	: 521818.22N 0002253.23W
BEVLU	: 521211.16N 0002005.53W
TC21I	: 521312.96N 0002802.74W
TC21F	: 521018.34N 0003059.14W
RW21	: 520444.32N 0003635.27W

VAR 0.4°W - 2019
Annual Rate of Change 0.15°E

RECOMMENDED PROFILE Gradient 5.2%, 320FT/NM

NM	6	5	4	3	2	1
ALT(HGT)	2320(1962)	2000(1642)	1680(1322)	1370(1012)	1050(692)	730(372)

MAPt (RW21) (THR RWY 21)
Climb straight ahead to 1500, then climbing left turn to 2500 to join the NDB(L) CIT hold.



Aircraft Category		A	B	C	Rate of descent	G/S KT	160	140	120	100	80
OCA (OCH)	LNAV	690(332)	690(332)	690(332)		FT/MIN	850	740	640	530	420
VM(C)OCA (OCH AAL)	Total Area	800(440)	970(610)	1150(790)							

- NOTE 1** CIT NDB(L) hold restrictions: MAX holding level 5000, MAX 180KIAS.
NOTE 2 Missed Approach Procedure uses conventional navigation aids and is not available without NDB(L) CIT.
NOTE 3 Occasional light aircraft and helicopter activity at Salford Helipad (520222N 0003841W), Hulcote Farm (520211N 0003706W), and Helimech Helipad (520152N 0003653W).
NOTE 4 Aircraft may be requested to report crossing the DTY115 radial.

CHANGE (10/18): FREQUENCIES.
AERO INFO DATE 14 JUN 18